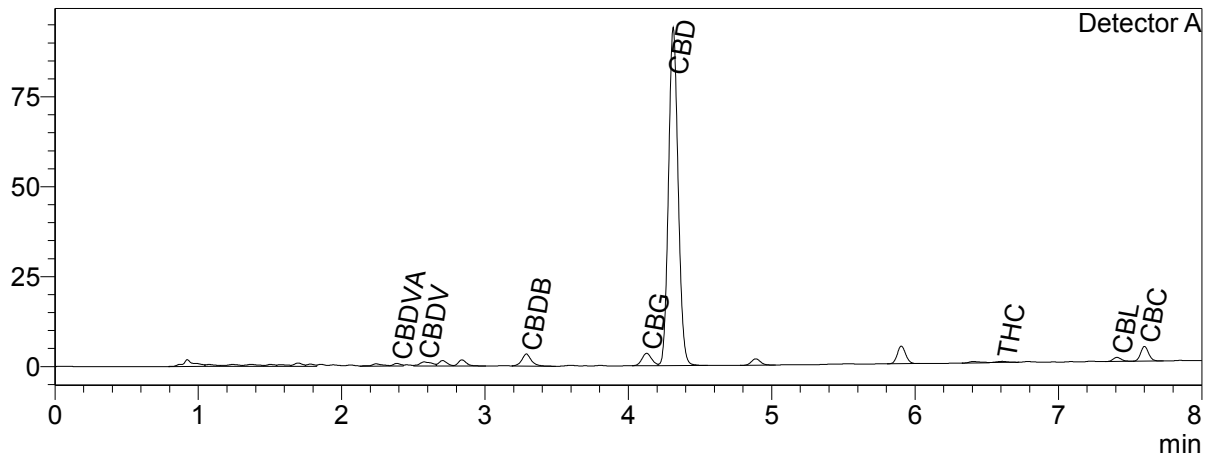


CERTIFICADO DE ANÁLISIS ACEITE DE CÁÑAMO 20% ESPECTRO COMPLETO CANNALEGRE

CERTIFICATE OF ANALYSIS

Chromatogram

mV



Quantitative Results

Detector A

| Compound Name | Concentration, % |
|---------------|------------------|
| CBDV | 0.309 |
| CBDA | -- |
| CBGA | -- |
| CBG | 0.842 |
| CBD | 21.719 |
| THCV | -- |
| CBN | -- |
| THC | 0.053 |
| CBC | 0.731 |
| THCA-A | -- |
| CBL | 0.166 |
| CBDVA | 0.099 |
| CBDB | 0.569 |

Sample information

Sample name: Batch 510
Analysis date: 2022 08 16

Summary

| | | |
|-----------|--------|------|
| Total THC | 0.05 | % |
| Total THC | 0.53 | mg/g |
| Total CBD | 21.72 | % |
| Total CBD | 217.19 | mg/g |

-- — compound below LOQ or not detected; LOQ < 0.001%
THC content does not exceed legal limits.

Instrumental and analytical conditions.

Sample preparation: 0.01 g (± 0.00001) of homogenous sample was diluted with 1 mL of HPLC grade methanol. Diluted sample was mixed, vortexed and centrifuged. Then the mixture was diluted again to a final concentration of 0.1 mg/mL. Peak identification and quantification was performed by comparing retention times and UV absorption spectra of the samples with those of the standard solutions.

Equipment: Quantitative analysis was performed using Shimadzu Cannabis Analyzer for Potency - an integrated HPLC system with built-in sample cooler, degasser, autoinjector and UV detector. NexLeaf CBX for potency, 2.7 μ m, 4.6 x 150 mm column coupled with NexLeaf Guard column. Data was analyzed using Shimadzu LabSolutions software.